



LED Tube (A3) Specification



LED Tube Light

◆ Product Features

- ✧ Internal Non-isolated power supply, High Power Factor more than 0.9.
- ✧ Use the high quality aluminum PCB for LED's better heat dissipation.
- ✧ High-grade PC cover -light transmittance (>95%), Transparent PC cover and frosted PC cover are available.
- ✧ High Light Efficiency up to 120lm/w.
- ✧ Lamp Material Available: AL+PC
- ✧ 3 Years Warranty

◆ Specification

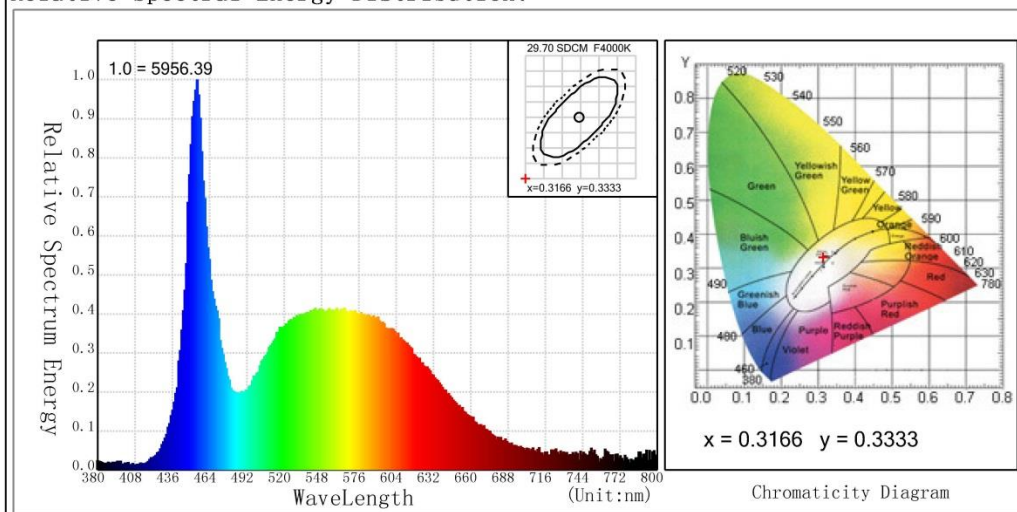


Model	T8-A3(AL+PC thick material)			
Size	0.6m	0.9m	1.2m	1.5m
Power	10W	14W	18W	22W
LED Chips	60pcs	72pcs	144pcs	168pcs
Luminous Efficiency	1200-1300lm	1680-1820lm	2160-2340lm	2640-2860lm
Voltage	AC90-265V			
Working Frequency	50-60HZ			
Power Efficiency	≥90%			
PF	≥0.9			
Color Rendering	Ra>80			
Color Temperature	3000-6500K			
Beam Angle	140°			
Warranty	3 year			

Number: _____

Light SpectroPhotoColorMeter Analysis Report

Relative Spectral Energy Distribution:



Main Parameters:

CCT	6267 K	MainWave	491 nm	Luminous	2235.60 lm	Efficiency	121.50
Current	0.087 A	Voltage	220.5 V	P	18.4 W	PF	0.9
Average Color Index	83.4			Chromatic Coordinate	x=0.3166, y=0.3333 u=0.1989, v=0.3141		

Other Parameters:

ColorPurity		5.7 %		PeakWave		455 nm		Peak		5956.4	
HalfWaveLength		18.7 nm		RedRatio		13.8 %		HZ		50 Hz	
CRI:		R1 = 82.0 R2 = 89.7 R3 = 91.8 R4 = 80.6 R5 = 81.3 R6 = 83.3 R7 = 88.4 R8 = 70.5 R9 = 13.3 R10 = 72.9 R11 = 78.9 R12 = 53.0 R13 = 84.7 R14 = 95.8 R15 = 78.4									

Product Information:

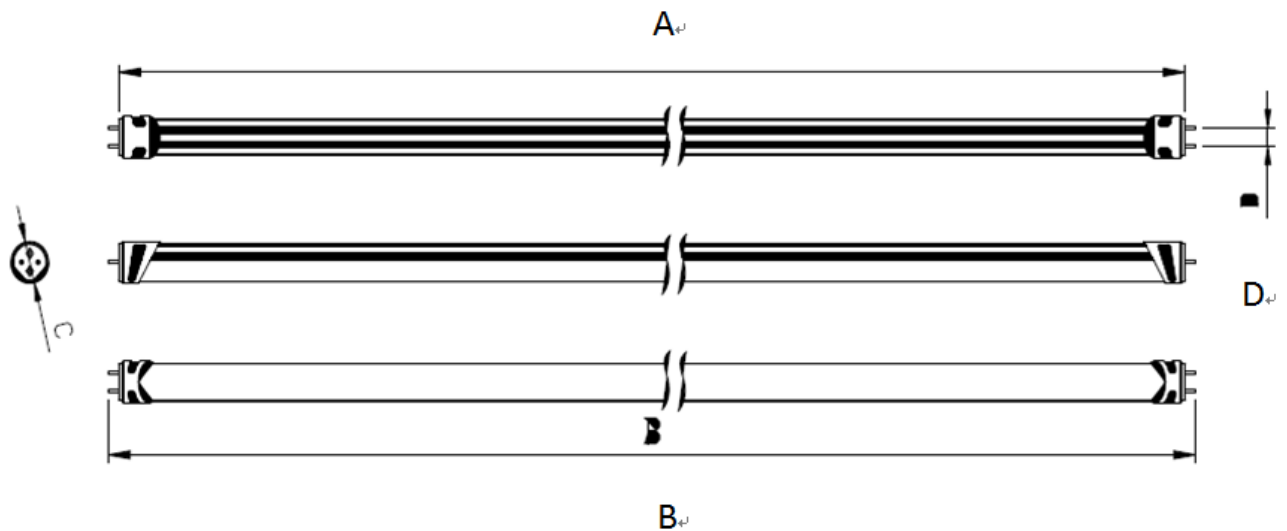
Number		Model	T8-1.2M-A3-18W
Temperature	32.6 °C	Humidity	64 %
Tester	Lily	Reviewer	Peter
Manufacturer		Time	2016-06-13 11:59:19

Notes: _____

LED Tube Light

◆ Dimensions

Model	Spec(mm)	A(mm)	B(mm)	C(mm)	D(mm)
T8-0.6m	L588*Φ26	588	605	26	15
T8-0.9m	L892*Φ26	892	907	26	15
T8-1.2m	L1198*Φ26	1198	1215	26	15
T8-1.5m	L1498*Φ26	1498	1513	26	15



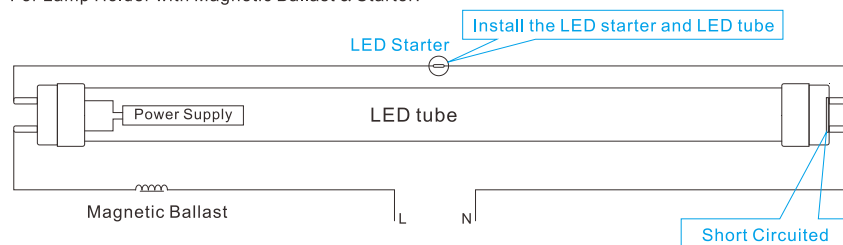
LED Tube Light

◆ Installation

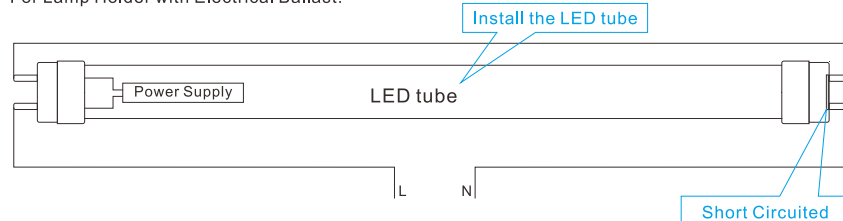
Installation of One Side Power in Tube:



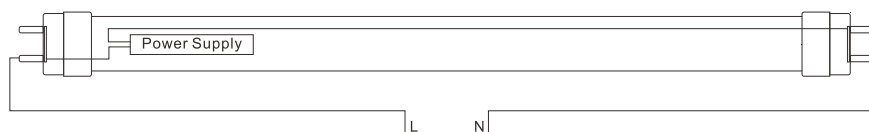
For Lamp Holder with Magnetic Ballast & Starter:



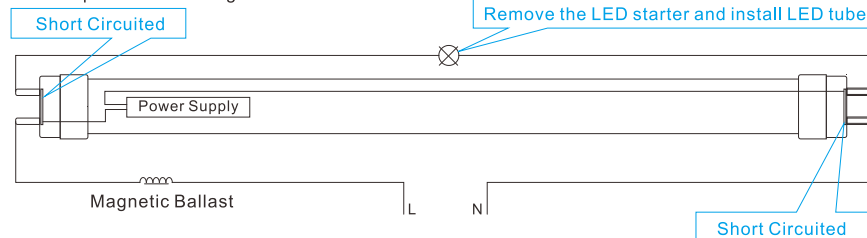
For Lamp Holder with Electrical Ballast:



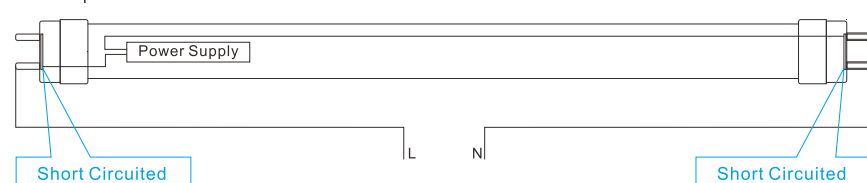
Installation of Both Sides Power in Tube:



For Lamp Holder with Magnetic Ballast & Starter:

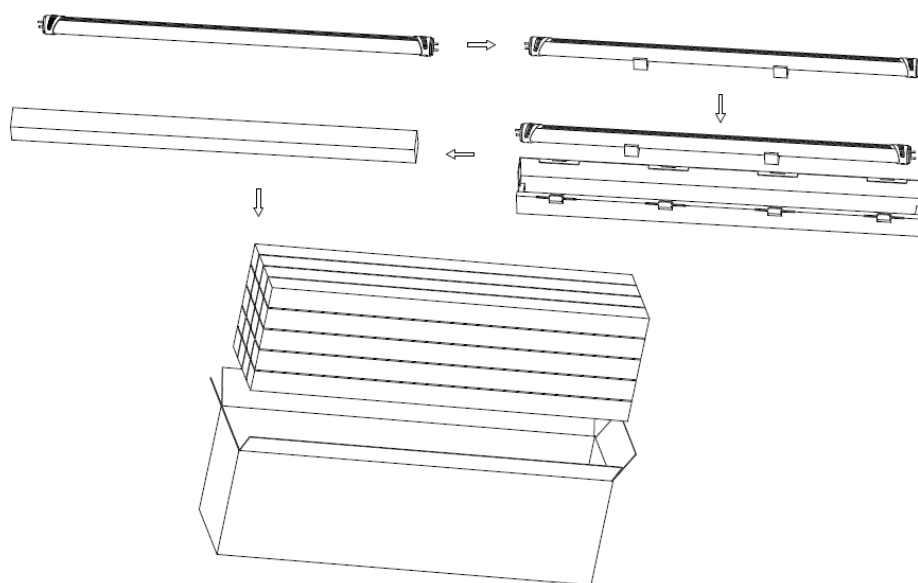


For Lamp Holder with Electrical Ballast:



LED Tube Light

◆ Packing Info



Model	Carton Size	Q'ty/CTN	GW./CTN
T8-0.6m	65*23*23mm	25	5.5kg
T8-0.9m	94*23*22mm	25	8.8kg
T8-1.2m	125*23*22mm	25	12.5kg
T8-1.5m	154*22*24mm	25	14.8kg